

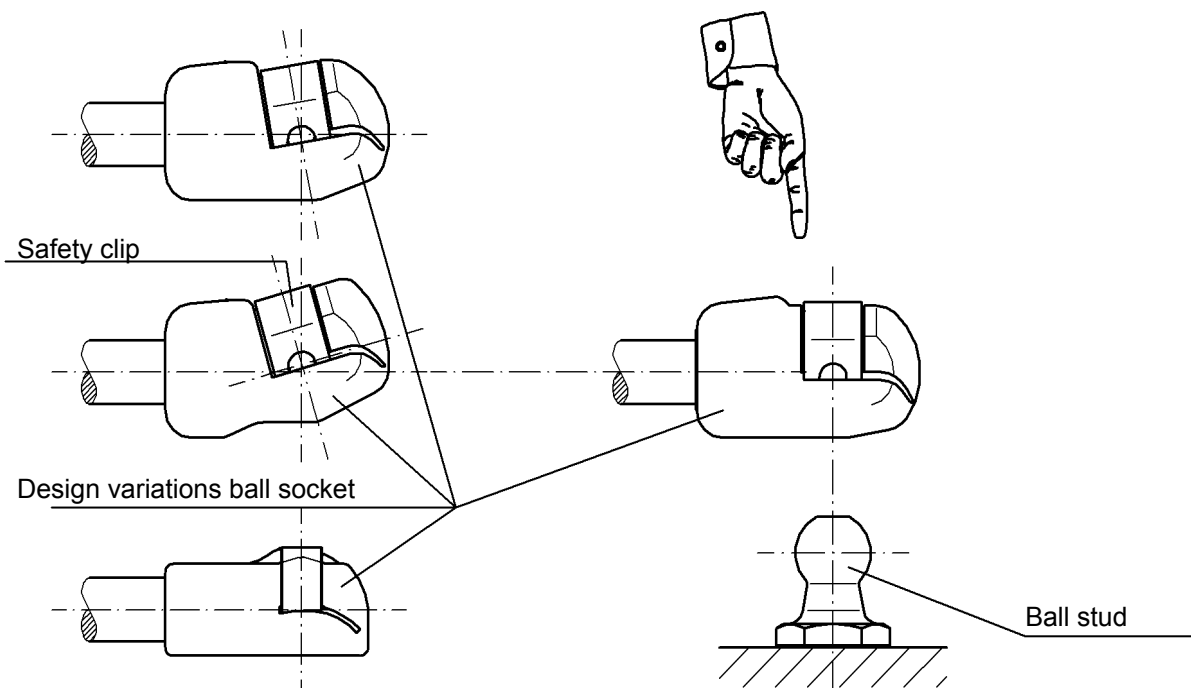
The print-out is not subject to the modification service.	<h2 style="margin: 0;">Instructions for assembly and disassembly of ball socket and ball stud</h2>		Document-No. STAB-Spec. 10006399 Page 0 of 3 Ident. Doc.: SN 7496DJ
	<b>Handwritten changes not permitted</b>		
Intended for internal and external use.	Revision no Name / Date 505450 R. Kirst 05.03.1999	<u>Revision specification:</u> Drawing no. SN 7496DJ replaced by document no. STAB-Spec. 10006399	<u>Revision</u>  1
	Revision no Name / Date 507399 Kannewurf 14.02.2001	<u>Revision specification:</u> Introduction of spanish version	<u>Revision</u>  2
	Revision no Name / Date 532586 Kannewurf 28.10.2003	<u>Revision specification:</u> New form	<u>Revision</u>  3
	Revision no Name / Date 563719 S.Bohrer 25.02.2008	<u>Revision specification:</u> 2.1: (approx. wide 3 mm); 2.2: (approx. 3 mm)	<u>Revision</u>  4
	Revision no Name / Date 583469 Kannewurf 09.02.2011	<u>Revision specification:</u> New: Pt. 3 „ Re-installation of the ball socket on the ball stud “, Page 3	<u>Revision</u>  5
	Revision no Name / Date 589036 Kannewurf 06.06.2011	<u>Revision specification:</u> Point 3 reworked	<u>Revision</u>  6
	Revision no Name / Date 600046 Kannewurf 11.10.2012	<u>Revision specification:</u> Introduction of rumanian version	<u>Revision</u>  7
Revision no Name / Date   	<u>Revision specification:</u>   	<u>Revision</u>  	
DE: X   EN: X   ES: X   IT: X   PR: X   FR: X   RO: X Preceding edition: 05.03.1999	Drawn: 14.02.2001 Kannewurf	Contents corresponds to the German version Approval: 11.10.2012; A. Schilz	Rev.:

The print-out is not subject to the modification service.

# Instructions for assembly and disassembly of ball socket and ball stud

Document-No.  
STAB-Spec. 10006399  
Page 1  
Ident. Doc.: SN 7496DJ

## 1. Assembly of ball socket onto ball stud



Intended for internal and external use.

EN

Position ball socket onto ball stud and insert manually, so that ball stud snaps in safety clip securely.

DE: X | EN: X | ES: X | IT: X | PR: X | FR: X | RO: X  
Preceding edition: 05.03.1999

Rev.: 7

The print-out is not subject to the modification service.

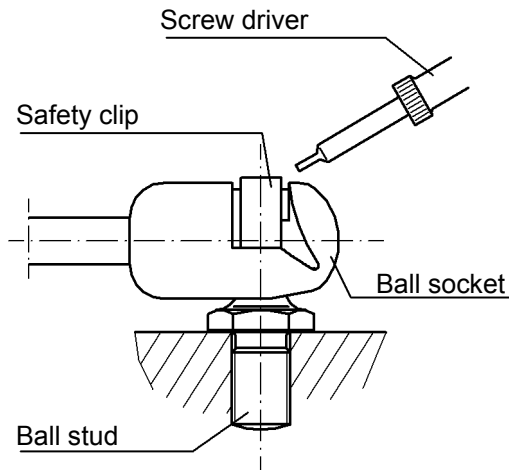
## Instructions for assembly and disassembly of ball socket and ball stud

Document-No.  
STAB-Spec. 10006399

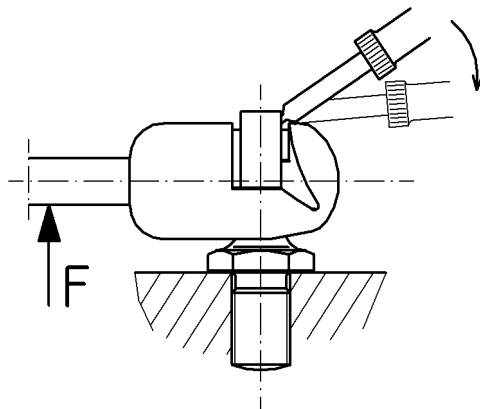
Page 2

Ident. Doc.: SN 7496DJ

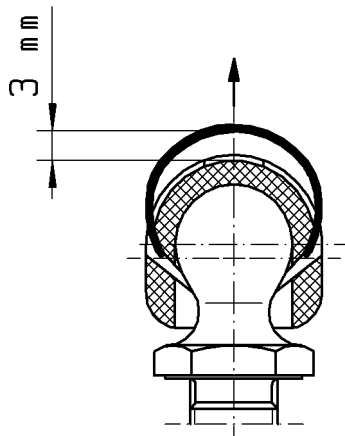
### 2. Disassembly of ball socket from ball stud



1. Insert a screwdriver (approx. 3mm wide) or a similar instrument into the gap between the retaining clip and the top of the ball socket.



2. Lift the retaining clip by turning the screwdriver until the ball socket can be easily detached from the ball stud by applying a low handforce  $F$ , (approx. 3mm)



**Caution:**

To ensure that the ball socket can be remounted, the retaining clip must not be completely removed from the guidance grooves. The retaining clip is preloaded

Intended for internal and external use.

EN

DE: X | EN: X | ES: X | IT: X | PR: X | FR: X | RO: X

Preceding edition: 05.03.1999

Rev.: 7

The print-out is not subject to the modification service.

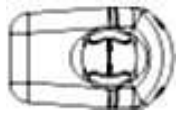
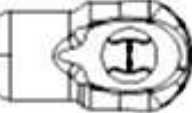


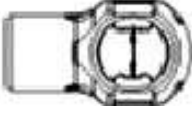
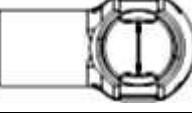
## Instructions for assembly and disassembly of ball socket and ball stud

Document-No.  
STAB-Spec. 10006399  
Page 3  
Ident. Doc.: SN 7496DJ

### 3. Re-installation of the ball socket on the ball stud

Before the remounting the following points are to be considered, since it must be guaranteed that only intact connecting units are used.

1. The safety clamp must fit centrally on the ball socket and complete in the retaining slots.
2. Ensure that the safety clamps and the ball sockets are not damaged in any way (scratches, deformation etc.)
3. The clip opening measure should be within the indicated min/max limits:

Marking	Design	clamp opening measurement
Plastic ball socket B10		Max. 6.2mm Min. 5.2mm
Plastic ball socket E10		Max. 6.2mm Min. 5.2mm
Plastic ball socket E 13		Max. 8.1mm Min. 7.1mm
Plastic ball socket F10		Max. 7.0mm Min. 6.0mm
Steel ball socket D10		Max. 7.4mm Min. 6.2mm
Steel ball socket D13		Max. 9.9mm Min. 8.9mm

4. Once the parts have been re-installed, a test must be carried out to ensure that the ball joint is securely mounted before and after the flap has been operated.

**Rev.: 7**

Intended for internal and external use.

**EN**

DE: X | EN: X | ES: X | IT: X | PR: X | FR: X | RO: X  
Preceding edition: 05.03.1999